

Circular Function-Based Gas-kinetic Scheme for Simulation of Viscous Compressible Flows

Zhuxuan Meng¹, Liming Yang², Donghui Wang^{1,*}, Chang Shu² and Weihua Zhang¹

¹College of Aerospace Science and Engineering, National University of Defense Technology, No. 109 Deya Road, Changsha, 410073, China.

²Department of Mechanical Engineering, National University of Singapore, 10 Kent Ridge Crescent, Singapore 119260, Singapore

*Corresponding author: xxmnu@163.com

Abstract. A stable gas-kinetic scheme based on circular function is proposed for simulation of viscous compressible flows in this paper. The main idea of this scheme is to simplify the integral domain of Maxwellian distribution function over the phase velocity and phase energy to modified Maxwellian function, which will integrate over the phase velocity only. Then the modified Maxwellian function can be degenerated to a circular function with the assumption that all particles are distributed on a circle. Firstly, the RAE2822 airfoil is simulated to validate the accuracy of this scheme. Then the nose part of an aerospace plane model is studied to prove the potential of this scheme in industrial application. Simulation results show that the method presented in this paper has a good computational accuracy and stability.

Keywords. Circular function, Maxwellian function, Gas-kinetic scheme, Viscous compressible flows.

1 Introduction

With the development of numerical simulation, the computational fluid dynamics (CFD) is becoming more and more important in industrial design of aircraft since its high-fidelity description of the flow field compared to the engineering method. Most numerical schemes are based on directly solving the Euler or N-S equations [1-3]. Whereas, a new method we proposed here is to solve the continuous Boltzmann model at the micro level and N-S equations at macro level. The gas-kinetic scheme (GKS) is commonly used as a continuous Boltzmann model which is based on the solution of Boltzmann equation and Maxwellian distribution function [4-7]. The GKS attracts more researchers' attention during the last thirty years since its good accuracy and efficiency in solving the inviscid and viscous fluxes respectively [8, 9].

The GKS is developed from the equilibrium flux method (EFM) [10] to solve inviscid flows in the very beginning. Then, the Kinetic Flux Vector Splitting (KFVS) [11] scheme is applied to solve collisionless Boltzmann equation. The Bhatnagar Gross Krook (BGK) gas kinetic scheme was developed by Prendergast et al. [12], Chae et al.

[13], Xu [14, 15] and other researchers based on the KFVS scheme. The particle collisions are considered in BGK scheme to improve the accuracy, which contributes great developments and application potential for BGK gas kinetic scheme.

In this work, a stable gas-kinetic scheme based on circular function framework is proposed for simulating the 2-D viscous compressible flows. Most existing GKS are based on Maxwellian function and make it time consuming and complex. Hence, the original Maxwellian function, which is the function of phase velocity and phase energy, is simplified into a function including phase velocity only. The effect of phase energy is contained in the particle inter energy e_p . Then, based on the assumption which all particles are concentrated on a circle, the simplified Maxwellian function can be reduced to a circular function, which makes the original infinite integral to be integrated along the circle. Compressible flow around RAE2822 airfoil is simulated to validate the proposed scheme. Furthermore, the nose part of an aerospace plane model is studied to prove the application potential of this scheme.

2 Methodology

2.1 Maxwellian Distribution Function

Maxwellian distribution function is an equilibrium state distribution of Boltzmann function. The continuous Boltzmann equation based on Bhatnagar Gross Krook (BGK) without external force collision model is shown as Eq. (1):

$$\frac{\partial f}{\partial t} + \xi \cdot \nabla f = \frac{1}{\tau} (f^{eq} - f), \quad (1)$$

where f is the gas distribution function and the superscript eq means the equilibrium state approached by f through particle collisions within a collision time scale τ .

The Maxwellian distribution function is

$$f^{eq} = g_M = \rho \left(\frac{\lambda}{\pi} \right)^{\frac{D+K}{2}} e^{-\lambda \left[\sum_{i=1}^D (\xi_i - U_i)^2 + \sum_{j=1}^K \xi_j^2 \right]}, \quad (2)$$

in which U_i is the macroscopic flow velocity in i -direction and $\lambda = m / (2kT) = 1 / (2RT)$. The number of phase energy variables is $K = 3 - D + N$. D is the dimension and N is freedom rotational degree number.

The heat ratio γ can be expressed as:

$$\gamma = \frac{b+2}{b} = \frac{K+D+2}{K+D}, \quad (3)$$

in which b represents the freedom degree number of molecules.

Based on Maxwellian function (Eq. (2)), the continuous Boltzmann equation (Eq. (1)) can be recovered to N-S equations by applying Chapman-Enskog expansion analysis [4] with following conservation moments equations:

$$\int g_M d\Xi = \rho, \quad (4a)$$

$$\int g_M \xi_\alpha d\Xi = \rho u_\alpha, \quad (4b)$$

$$\int g_M (\xi_\alpha \xi_\alpha + \sum_{j=1}^K \zeta_j^2) d\Xi = \rho(u_\alpha u_\alpha + bRT), \quad (4c)$$

$$\int g_M \xi_\alpha \xi_\beta d\Xi = \rho u_\alpha u_\beta + p \delta_{\alpha\beta}, \quad (4d)$$

$$\int g_M (\xi_\alpha \xi_\alpha + \sum_{j=1}^K \zeta_j^2) \xi_\beta d\Xi = \rho[u_\alpha u_\alpha + (b+2)RT]u_\beta, \quad (4e)$$

in which $d\Xi = d\xi_\alpha d\xi_\beta d\xi_\gamma d\xi_\delta d\zeta_1 d\zeta_2 \cdots d\zeta_K$ is the volume element in the phase velocity and energy space. ρ is the density of mean flow, the integral domain for each variable is $(-\infty, +\infty)$.

Due to phase velocity is independent from phase energy space, Eq. (2) can be written as:

$$g_M = g_{M1} \cdot g_{M2}, \quad (5)$$

$$g_{M1} = \rho \left(\frac{\lambda}{\pi} \right)^{\frac{D}{2}} e^{-\lambda \sum_{i=1}^D (\xi_i - u_i)^2}, \quad (6)$$

$$g_{M2} = \rho \left(\frac{\lambda}{\pi} \right)^{\frac{K}{2}} e^{-\lambda \sum_{j=1}^K \zeta_j^2}. \quad (7)$$

If we define $d\Xi_1 = d\xi_\alpha d\xi_\beta d\xi_\gamma$ and $d\Xi_2 = d\zeta_1 d\zeta_2 \cdots d\zeta_K$, then we can get $d\Xi = d\Xi_1 d\Xi_2$. With these definitions, the integral form of g_{M2} can be concluded as:

$$\int g_{M2} d\Xi_2 = \int \left(\frac{\lambda}{\pi} \right)^{\frac{K}{2}} e^{-\lambda \sum_{j=1}^K \zeta_j^2} d\zeta_1 d\zeta_2 \cdots d\zeta_K = 1. \quad (8)$$

Substituting Eq. (5)-Eq. (8) to Eq. (4), we have

$$\int g_{M1} d\Xi_1 = \rho, \quad (9a)$$

$$\int g_{M1} \xi_\alpha d\Xi_1 = \rho u_\alpha, \quad (9b)$$

$$\int g_{M1}(\xi_\alpha \xi_\alpha + 2e_p) d\Xi_1 = \rho(u_\alpha u_\alpha + bRT), \quad (9c)$$

$$\int g_{M1} \xi_\alpha \xi_\beta d\Xi_1 = \rho u_\alpha u_\beta + p \delta_{\alpha\beta}, \quad (9d)$$

$$\int g_{M1}(\xi_\alpha \xi_\alpha + 2e_p) \xi_\beta d\Xi_1 = \rho[u_\alpha u_\alpha + (b+2)RT]u_\beta, \quad (9e)$$

in which e_p is particle potential energy, shown as Eq. (10):

$$e_p = \frac{1}{2} \int g_{M2} \sum_{j=1}^K \zeta_j^2 d\Xi_2 = \frac{K}{4\lambda} = [1 - \frac{D}{2}(\gamma - 1)]e, \quad (10)$$

where $e = p / [(\gamma - 1)\rho]$ is the potential energy of mean flow. It can be seen from Eq. (9) and Eq. (10) that e_p is independent from phase velocity ξ_i .

2.2 Simplified Circular Function

Suppose that all the particles in the phase velocity space are concentrated on a circle which has center (u_1, u_2) and radius c , shown as:

$$(\xi_1 - u_1)^2 + (\xi_2 - u_2)^2 = c^2, \quad (11)$$

in which c^2 means the mean particle kinetic energy and we have

$$c^2 = \frac{\int \sum_{i=1}^D (\xi_i - U_i)^2 g_{M1} d\Xi_1}{\int g_{M1} d\Xi_1} = \frac{D}{2\lambda} = D(\gamma - 1)e. \quad (12)$$

By substituting Eq. (12) into Eq. (9a) we can get Eq. (13), which is the mass conservation form in the cylindrical coordinate system:

$$\rho = \int_0^{2\pi} \int_0^\infty \rho \left(\frac{\lambda}{\pi} \right)^{\frac{D}{2}} e^{-\lambda r^2} \delta(r - c) r dr d\theta = 2\pi c \rho \left(\frac{\lambda}{\pi} \right)^{\frac{D}{2}} e^{-\lambda c^2}. \quad (13)$$

Then we can get the simplified circular function shown as follows:

$$g_c = \begin{cases} \frac{\rho}{2\pi} & (\xi_1 - u_1)^2 + (\xi_2 - u_2)^2 = c^2, \\ 0 & \text{else.} \end{cases}. \quad (14)$$

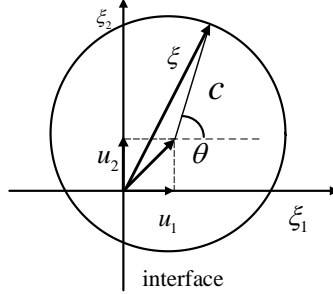


Fig. 1. Configuration of the phase velocity at a cell interface

All particles are concentrated on the circle and the velocity distribution is shown as Fig. 1. Then the phase velocity components in the Cartesian coordinate system can be expressed as:

$$\xi_1 = u_1 + c \cos(\theta), \quad (15a)$$

$$\xi_2 = u_2 + c \sin(\theta). \quad (15b)$$

Substituting Eq. (14) and Eq. (15) to Eq. (9), the conservation forms of moments to recover N-S equations can be expressed as follows:

$$\int g_{M1} d\Xi_1 = \int_0^{2\pi} g_C d\theta = \rho, \quad (16a)$$

$$\int g_{M1} \xi_\alpha d\Xi_1 = \int_0^{2\pi} g_C \xi_\alpha d\theta = \rho u_\alpha, \quad (16b)$$

$$\int g_{M1} (\xi_\alpha \xi_\alpha + 2e_p) d\Xi_1 = \int_0^{2\pi} g_C (\xi_\alpha \xi_\alpha + 2e_p) d\theta = \rho(u_\alpha u_\alpha + bRT), \quad (16c)$$

$$\int g_{M1} \xi_\alpha \xi_\beta d\Xi_1 = \int_0^{2\pi} g_C \xi_\alpha \xi_\beta d\theta = \rho u_\alpha u_\beta + p\delta_{\alpha\beta}, \quad (16d)$$

$$\int g_{M1} (\xi_\alpha \xi_\alpha + 2e_p) \xi_\beta d\Xi_1 = \int_0^{2\pi} g_C (\xi_\alpha \xi_\alpha + 2e_p) \xi_\beta d\theta = \rho[u_\alpha u_\alpha + (b+2)RT]u_\beta. \quad (16e)$$

2.3 Governing Equations Discretized by Finite Volume Method

N-S equation discretized by finite volume method in 2-dimensional can be expressed as:

$$\frac{dW_l}{dt} = -\frac{1}{\Omega_l} \sum_{j=1}^{N_f} F_{Nj} S_j, \quad (17)$$

in which I represents the index of a control volume, Ω_I is the volume, N_f means the number of interfaces of control volume I and S_j is the area of the interface in this volume. The conservative variables \mathbf{W} and convective flux \mathbf{F}_n can be expressed as:

$$\mathbf{W} = \begin{bmatrix} \rho \\ \rho u_1 \\ \rho u_2 \\ \rho(u_1^2 + u_2^2 + bRT)/2 \end{bmatrix}, \quad \mathbf{F} = \begin{bmatrix} \rho U_n \\ \rho u_1 U_n + n_x p \\ \rho u_2 U_n + n_y p \\ U_n \rho(u_1^2 + u_2^2 + (b+2)RT)/2 \end{bmatrix}. \quad (18)$$

Suppose that cell interface is located on $\mathbf{r} = 0$, then the distribution function at cell interface (Eq. (19)) consists two parts, the equilibrium part f^{eq} and the non-equilibrium part f^{neq} :

$$f(0, t) = g_c(0, t) + f^{neq}(0, t) = f^{eq}(0, t) + f^{neq}(0, t). \quad (19)$$

To recover N-S equations by Boltzmann equation from Chapman-Enskog analysis [4, 9, 16-19], the non-equilibrium part $f_i^{neq}(0, t)$ applying Taylor series expansion in time and physics space can be written as:

$$f^{neq}(0, t) = -\tau_0 \left[g_c(0, t) - g_c(-\xi \delta t, t - \delta t) + o(\delta t^2) \right]. \quad (20)$$

Substituting Eq. (20) into Eq. (19) and omit the high order error item, then we have

$$f(0, t) \approx g_c(0, t) + \tau_0 \left[g_c(-\xi \delta t, t - \delta t) - g_c(0, t) \right], \quad (21)$$

in which $g_c(-\xi \delta t, t - \delta t)$ is the distribution function around the cell interface, $\tau_0 = \tau / \delta t = \mu / p \delta t$ is dimensionless collision time. μ is dynamic coefficient of viscosity, δt is the streaming time step which represents the physical viscous of N-S equations. Now convective flux at cell interface can be expressed as:

$$\mathbf{F} = \mathbf{F}^I + \tau_0 (\mathbf{F}^{II} - \mathbf{F}^I), \quad (22)$$

in which \mathbf{F}^I represents contribution of equilibrium distribution function $g_c(0, t)$ at cell interface and \mathbf{F}^{II} means equilibrium distribution function $g_c(-\xi \delta t, t - \delta t)$ at surrounding point of the cell interface. Their functions are shown as:

$$\mathbf{F}^I = \begin{bmatrix} \rho u_1 \\ \rho u_1 u_1 + p \\ \rho u_1 u_2 \\ (\rho E + p) u_1 \end{bmatrix}^{face}, \quad (23)$$

$$\mathbf{F}^{\text{II}} = \int \xi_1^{\text{cir}} \phi_a^{\text{cir}} g_C^{\text{cir}} d\theta, \quad (24)$$

in which the superscript *face* represents value at $(0, t)$ and *cir* means $(-\xi\delta t, t - \delta t)$.

When $\xi_1 \geq 0$, we have expressions as Eq. (25). The superscript *L* become *R* when $\xi_1 < 0$:

$$\xi_1^{\text{cir}} = u_1^L - \frac{\partial u_1^L}{\partial x_1} (u_1^+ + c^+ \cos(\theta))\delta t - \frac{\partial u_1^L}{\partial x_2} (u_2^+ + c^+ \sin(\theta))\delta t + c^+ \cos(\theta), \quad (25a)$$

$$\xi_2^{\text{cir}} = u_2^L - \frac{\partial u_2^L}{\partial x_1} (u_1^+ + c^+ \cos(\theta))\delta t - \frac{\partial u_2^L}{\partial x_2} (u_2^+ + c^+ \sin(\theta))\delta t + c^+ \sin(\theta), \quad (25b)$$

$$e_p^{\text{cir}} = e_p^L - \frac{\partial e_p^L}{\partial x_1} (u_1^+ + c^+ \cos(\theta))\delta t - \frac{\partial e_p^L}{\partial x_2} (u_2^+ + c^+ \sin(\theta))\delta t, \quad (25c)$$

$$g_C^{\text{cir}} = g_C^L - \frac{\partial g_C^L}{\partial x_1} (u_1^+ + c^+ \cos(\theta))\delta t - \frac{\partial g_C^L}{\partial x_2} (u_2^+ + c^+ \sin(\theta))\delta t. \quad (25d)$$

Substituting Eq. (25) into Eq. (24), the final expression of the equilibrium distribution function at the surrounding points of the cell interface \mathbf{F}^{II} can be calculated by

$$\mathbf{F}^{\text{II}}(1) = \int \xi_1^{\text{cir}} g_C^{\text{cir}} d\theta = \int (a_0 + a_1 r + a_2 s)(g_0 + g_1 r + g_2 s) d\theta, \quad (26a)$$

$$\mathbf{F}^{\text{II}}(2) = \int \xi_1^{\text{cir}} \xi_1^{\text{cir}} g_C^{\text{cir}} d\theta = \int (a_0 + a_1 r + a_2 s)(a_0 + a_1 r + a_2 s)(g_0 + g_1 r + g_2 s) d\theta, \quad (26b)$$

$$\mathbf{F}^{\text{II}}(3) = \int \xi_1^{\text{cir}} \xi_2^{\text{cir}} g_C^{\text{cir}} d\theta = \int (a_0 + a_1 r + a_2 s)(b_0 + b_1 r + b_2 s)(g_0 + g_1 r + g_2 s) d\theta, \quad (26c)$$

$$\begin{aligned} \mathbf{F}^{\text{II}}(4) &= \int \xi_1^{\text{cir}} \left(\frac{1}{2} |\xi^{\text{cir}}|^2 + e_p^{\text{cir}} \right) g_C^{\text{cir}} d\theta \\ &= \int (a_0 + a_1 r + a_2 s) \left(\frac{1}{2} ((a_0 + a_1 r + a_2 s)^2 + (b_0 + b_1 r + b_2 s)^2) + (e_0 + e_1 r + e_2 s) \right) \\ &\quad (g_0 + g_1 r + g_2 s) d\theta. \end{aligned} \quad (26d)$$

The operators in Eq. (26) can be expressed as:

$$\begin{aligned}
a_0 &= u_1^L - \frac{\partial u_1^L}{\partial x_1} u_1^+ \delta t - \frac{\partial u_1^L}{\partial x_2} u_2^+ \delta t, a_1 = c^+ - \frac{\partial u_1^L}{\partial x_1} c^+ \delta t, a_2 = -\frac{\partial u_1^L}{\partial x_2} c^+ \delta t, \\
b_0 &= u_2^L - \frac{\partial u_2^L}{\partial x_1} u_1^+ \delta t - \frac{\partial u_2^L}{\partial x_2} u_2^+ \delta t, b_1 = -\frac{\partial u_2^L}{\partial x_1} c^+ \delta t, b_2 = c^+ - \frac{\partial u_2^L}{\partial x_1} c^+ \delta t, \\
e_0 &= e_p^L - \frac{\partial e_p^L}{\partial x_1} u_1^+ \delta t - \frac{\partial e_p^L}{\partial x_2} u_2^+ \delta t, e_1 = -\frac{\partial e_p^L}{\partial x_1} c^+ \delta t, e_2 = -\frac{\partial e_p^L}{\partial x_2} c^+ \delta t, \\
g_0 &= g_c^L - \frac{\partial g_c^L}{\partial x_1} u_1^+ \delta t - \frac{\partial g_c^L}{\partial x_2} u_2^+ \delta t, g_1 = -\frac{\partial g_c^L}{\partial x_1} c^+ \delta t, g_2 = -\frac{\partial g_c^L}{\partial x_2} c^+ \delta t,
\end{aligned} \tag{27}$$

in which u_1^+ , u_2^+ and c^+ are predictional normal velocity, tangential velocity and particle specific velocity at cell interface. These velocities can be obtained both by Roe average [19] and the value of the former moment at cell interface.

3 Numerical Simulations

To validate the proposed circular function-based gas-kinetic scheme for simulation of viscous compressible flows, the RAE2822 airfoil and nose part of aerospace plane model are discussed.

3.1 Case1: compressible flow around RAE2822 airfoil

The transonic flow around RAE2822 airfoil is discussed to validate the accuracy of the proposed scheme. The free stream has Mach number of $Ma_\infty = 0.729$ with 2.31 degree angle of attack.

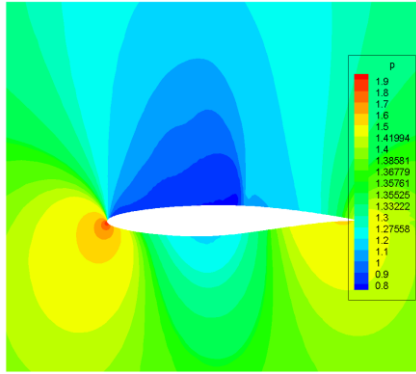


Fig. 2. Pressure contours of presented scheme around RAE2822 airfoil.

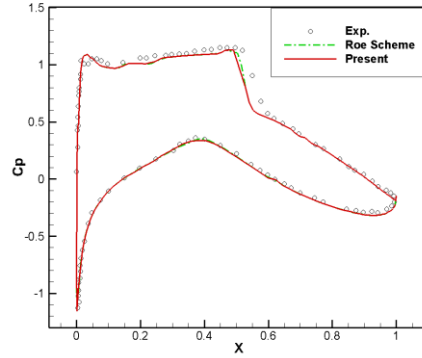


Fig. 3. Pressure coefficient comparison of RAE2822 airfoil surface.

Fig. 2 shows the pressure contours obtained by the proposed scheme. Fig. 3 shows the comparison between experimental data [20], Roe scheme and the presented scheme. It

can be seen clearly that the presented scheme has good accordance with both experimental data and results of Roe scheme.

3.2 Case2: supersonic flow around nose part of aerospace plane model

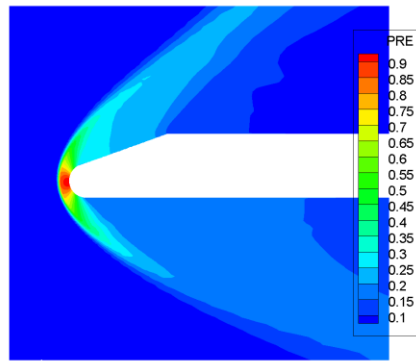


Fig. 4. Pressure contours at 5 degree angle of attack

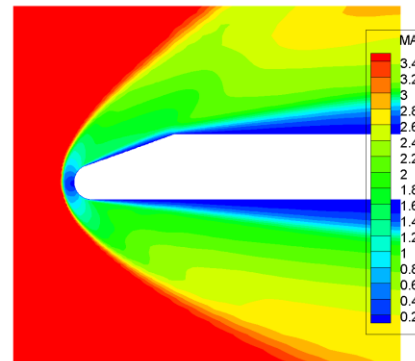


Fig. 5. Mach number contours at 5 degree angle of attack

The supersonic flow around the nose part of an aerospace plane model (wind tunnel) is simulated in this section. The model is 290mm in length, 58mm in width, the head radius is 15mm and semi-cone angle is 20 degree. The free stream has Mach number of $Ma_\infty = 3.6$ with -5, 0 and 5 degree angle of attack respectively. Fig. 4 gives out the pressure contours simulated by the presented scheme at 5 degree angle of attack, and Fig. 5 is the Mach number contours at the same condition.

Fig. 6 shows comparison of pressure coefficient distribution on upper and lower surface of aerospace plane model at -5 angle of attack, which computed by scheme presented, Roe scheme and Van Leer scheme. It can be seen that the result of present solver has good accordance with other two numerical schemes. Similar conclusions can be obtained according to Fig. 7 and Fig.8. Therefore, the solver presented in this article shows both high computational accuracy and numerical stability. Hence, the circular function-based gas-kinetic scheme shows the potential of future industrial application in flight vehicle research and design.

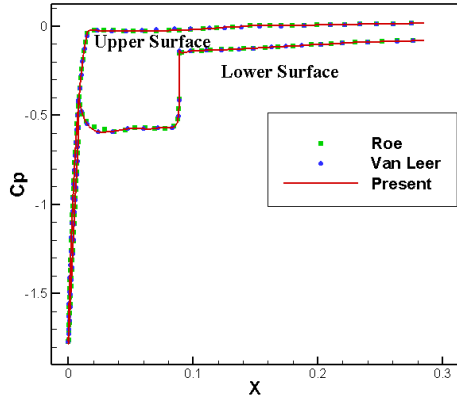


Fig. 6. Pressure coefficient comparison at -5 degree angle of attack

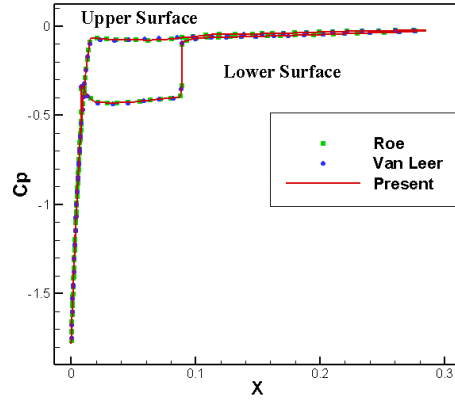


Fig. 7. Pressure coefficient comparison at 0 degree angle of attack

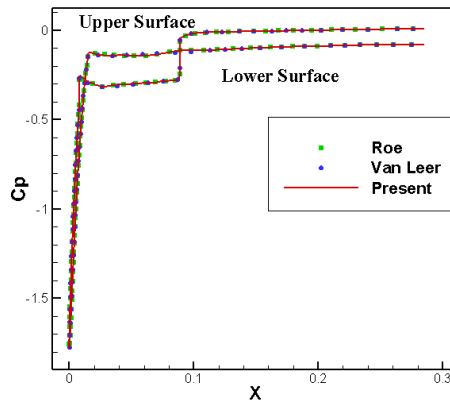


Fig. 8. Pressure coefficient comparison at 5 degree angle of attack

4 Conclusions

This paper presents a stable gas-kinetic scheme based on circular function. It is focus on improving the calculation efficiency of existing GKS. Firstly, simplifying the original Maxwellian function, which is the function of phase velocity and phase energy, into the function of phase velocity. Furthermore, reducing the simplified function to a circular function. Hence, the original infinite integral can be changed to the integral along the circle.

Transonic flow around RAE2822 airfoil and supersonic flow around the nose part of an aerospace plane model are studied. The results show a good computational accuracy and the potential for future industrial application.

References

1. J. D. Anderson: Computational fluid dynamics: the basics with application. McGraw-Hill, 1995.
2. J. Blazek: Computational fluid dynamics: principles and applications. Elsevier Science, 2001.
3. E.F. Toro: Riemann solvers and numerical methods for fluid dynamics. Springer Science & Business Media, 2009.
4. L.M. Yang, C. Shu, J. Wu: A hybrid lattice Boltzmann flux solver for simulation of viscous compressible flows. *Adv. Appl. Math. Mech.*, 2016, 8(6): 887-910.
5. L.M. Yang, C. Shu, J. Wu: A moment conservation-based non-free parameter compressible lattice Boltzmann model and its application for flux evaluation at cell interface. *Comput. Fluids*, 2013, 79: 190-199.
6. Z. Chen, C. Shu, Y. Wang, L.M. Yang, D. Tan: A simplified lattice Boltzmann method without evolution of distribution function. *Adv. Appl. Math. Mech.*, 2017, 9(1): 1-22.
7. L.M. Yang, C. Shu, J. Wu: Extension of lattice Boltzmann flux solver for simulation of 3D viscous compressible flows, *Computers and Mathematics with Application*, 71 (2016): 2069-2081.
8. L.M. Yang, C. Shu, J. Wu, N. Zhao, Z.L. Lu: Circular function-based gas-kinetic scheme for simulation of inviscid compressible flows. *J. Comput. Phys.*, 2013, 255: 540-557.
9. L.M. Yang, C. Shu, J. Wu: A three-dimensional explicit sphere function-based gas-kinetic flux solver for simulation of inviscid compressible flows. *Journal of Computational Physics*, 295 (2015), 322-339.
10. D.I. Pullin: Direct simulation methods for compressible inviscid ideal-gas flow, *J. Comput. Phys.* 34 (1980) 231–244.
11. J.C. Mandal, S.M. Deshpande, Kinetic flux vector splitting for Euler equations, *Comput. Fluids* 23 (1994) 447–478.
12. K.H. Prendergast, K. Xu: Numerical hydrodynamics from gas-kinetic theory, *J. Comput. Phys.* 109 (1993) 53–66.
13. D. Chae, C. Kim, O. H. Rho: Development of an improved gas-kinetic BGK scheme for inviscid and viscous flows, *J. Comput. Phys.* 158 (2000) 1–27.
14. K. Xu: A gas-kinetic BGK scheme for the Navier–Stokes equations and its connection with artificial dissipation and Godunov method, *J. Comput. Phys.* 171 (2001) 289–335.
15. K. Xu and X. Y. He: Lattice Boltzmann method and gas-kinetic BGK scheme in the low-Mach number viscous flow simulations, *J. Comput. Phys.*, 190 (2003), pp. 100–117.
16. Z.L. Guo and C. Shu, *Lattice Boltzmann method and its applications in engineering*, World Scientific Publishing, 2013.
17. R. Benzi, S. Succi and M. Vergassola: The lattice Boltzmann equation: theory and application, *Physics Report*, 1992.
18. P. L. Bhatnagar, E. P. Gross and M. Krook: A model for collision processes in gases. I: small amplitude processes in charged and neutral one-component systems, *Phys. Rev.*, 94 (1954), pp. 511–525.
19. P.L. Roe: Approximate Riemann solvers, parameter vectors, and difference schemes, *J. Comput. Phys.* 43 (1981) 357–372.
20. J.W. Slater: RAE 2822 Transonic Airfoil: Study #1, <https://www.grc.nasa.gov/www/wind/val-id/raetaf/raetaf.html>.